

# Candy Neuron

**This exercise is brain candy, literally and figuratively. Using our template and firing your own brain synapses, you can build a candy model of a neuron, the basic building block of the brain!**

Neurons are the building blocks of the brain. These cells send and receive electrical and chemical signals, organized into patterns and networks within the brain, communicating with each other at incredible speeds, and transmitting information to other neurons, muscles, and tissues throughout the body. This is what allows your brain to do everything from breathing to talking, eating, walking, feeling, thinking, and comprehending the world around you. Neurons vary in size, shape, and structure depending on their role and location. However, nearly all neurons have three essential parts: a cell body, an axon, and dendrites.



## Materials

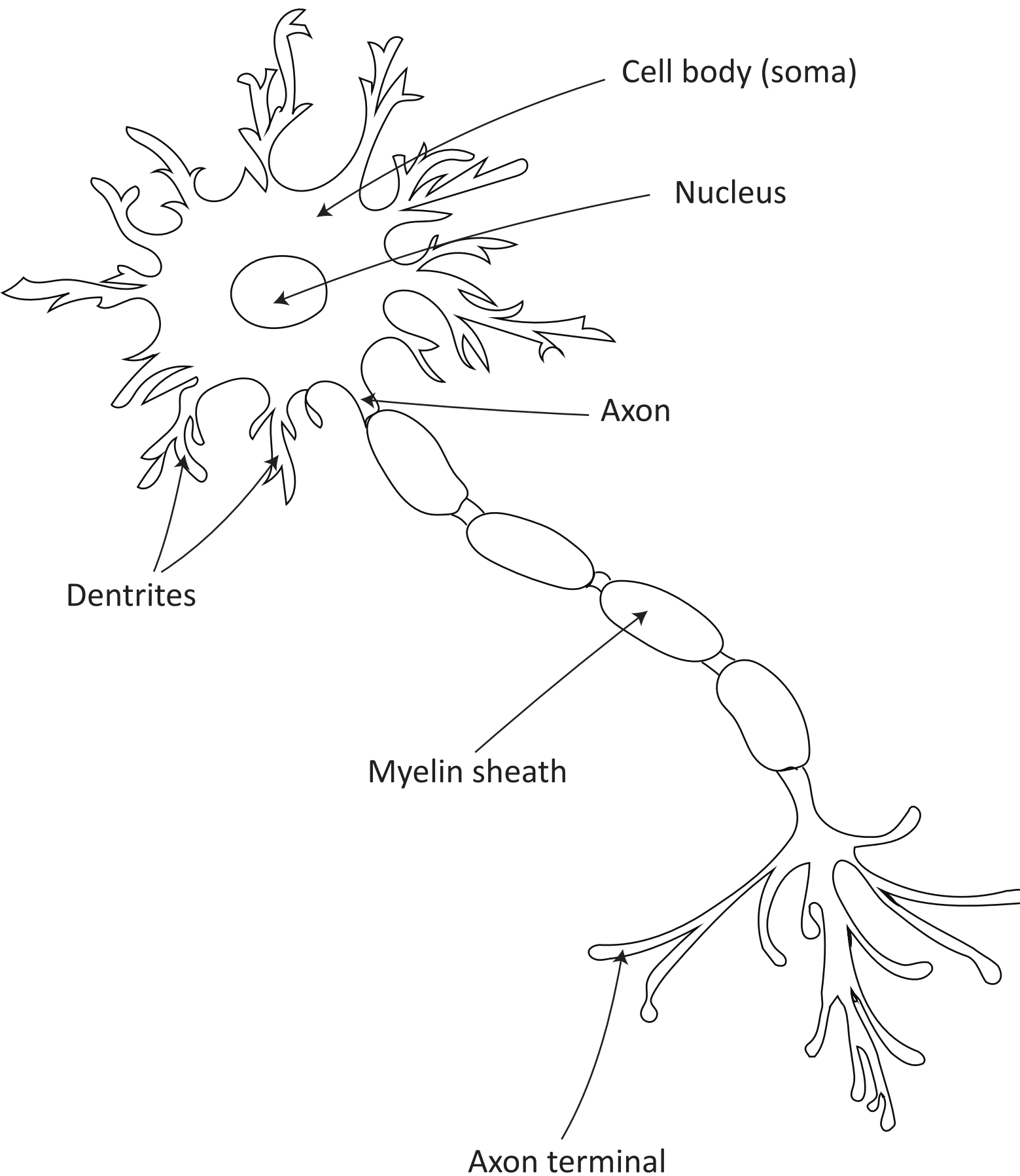
- Print out the neuron template on page 2. If you can't print, use a paper plate to draw the template.
- Vanilla frosting
- Various candy
- Candy suggestions for each part of the neuron:  
Gummy peach ring (Soma), Sour Punch Straws or Bites (Cell Body), Skittles or M&M's (Nucleus), Twizzlers (Axon), Sour Gummy Worms (Axon terminal, dendrites), Marshmallows, Mike & Ikes (myelin sheath)



## Instructions

1. Spread a layer of vanilla frosting onto the area where you want to place a piece of candy
2. Use the frosting to "glue" the candy in place.
3. Use the candies suggested to match the shape of each part of the neuron.
4. If you build the candy neuron on the paper plate, you can also label the parts as you go.





Cell body (soma)

Nucleus

Axon

Myelin sheath

Axon terminal

Dendrites